

KEY TO ADULT SOIL AND LITTER INVERTEBRATES

- 1a. Body segmented.....2
- 1b. Body not segmented, usually with a coiled shell.....Gastropoda (snails)
- 2a. Appendages segmented.....3
- 2b. Appendages (if present) not segmented.....Annelida (segmented worms)
- 3a. Antennae present.....7
- 3b. Antennae absent.....4
- 4a. Three pairs of legs.....Protura
- 4b. Four pairs of legs (pedipalps in front of legs & may appear leg-like).....5
- 5a. Pedipalps with pincher-like claws, abdomen segmented.....Pseudoscorpionida
(psuedoscorpions)
- 5b. Pedipalps without pincher-like claws, abdomen not segmented.....6
- 6a. Cephalothorax & abdomen joined by a narrow connection.....Araneae (spiders)
- 6b. Cephalothorax & abdomen joined by a broad connection.....Acarina (mites)
- 7a. Three pairs of legs (Insects).....12
- 7b. More than three pairs of legs.....8
- 8a. Distinct head followed by a series of segments.....9
- 8b. Distinct head absent.....Isopoda (pillbugs)
- 9a. 9-12 pairs of legs.....10
- 9b. More than 12 pairs of legs.....11
- 10a. Antennae branched.....Pauropoda
- 10b. Antennae not branched.....Symphyla
- 11a. Two pairs of legs on most body segments.....Diploda (millepedes)
- 11b. One pair of legs on each body segment.....Chilopoda (centipedes)
- 12a. Winged or with plate over thorax.....16
- 12b. No wings and no plate over thorax.....13
- 13a. Narrow-waisted, ant-like.....Hymenoptera (ants)
- 13b. Not narrow-waisted & ant-like.....14
- 14a. Abdomen with 2-3 finger-like appendages on tail.....Thysanura (bristletails)
not fork-like
- 14b. Abdomen without finger-like appendages.....15
- 15a. Fork-like (2-part) jumping appendage on tail.....Collembola (springtails)
- 15b. No fork on tail.....Thysanoptera (thrips)
- 16a. Front wings hard or leathery, covering hind wings.....Coleoptera (beetles)
- 16b. Front wings not hard or leathery or not present.....17
- 17a. Front wings thickened at base, membranous at tip,Hemiptera (bugs)
sucking mouth parts
- 17b. Wings with veins, overlapping or held rooflike.....Orthoptera (grasshoppers)
(if present), plate over thorax, chewing mouth parts

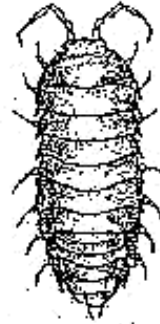
COMMON ADULT SOIL & LITTER INVERTEBRATES



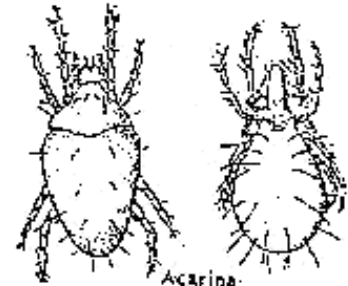
Annelida
(earthworm)



Gastropoda
(snails)



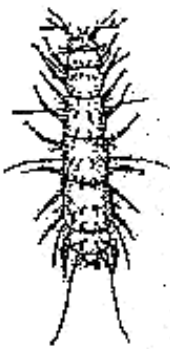
Isopoda
(pill bug)



Acarina
(mites)



Pseudoscorpion



Pauropoda



Symphyla



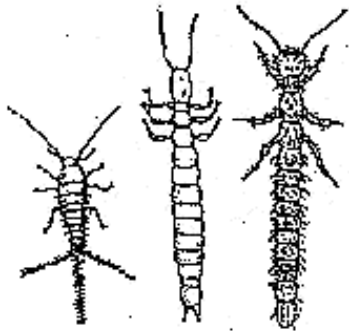
Diploida
(millipede)



Chilopoda
(centipede)



Aranea
(spiders)



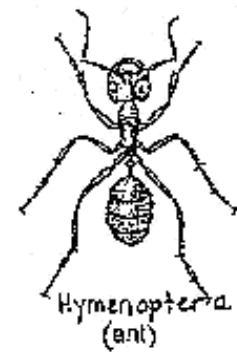
Thysanura



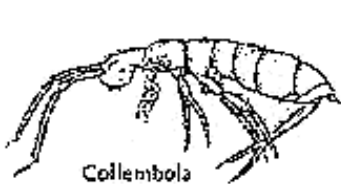
Protura



Coleoptera
(beetles)



Hymenoptera
(ant)



Collembola
(springtail)



Thysanoptera